



Beaver Valley Artists

Official Newsletter of the Beaver Valley Artists

October 2009

Next Meeting

Wednesday, October 7, 7:00 pm

Merrick Art Gallery

Program

Bill Vrscak: Figures in Watercolors

Please arrive early for meeting. Bill will need 2 hours for the demonstration.

Upcoming Programs

Thursday, November 12 – Barry Jeter:

Oil method on illustration board

Refreshments for the October BVA meeting compliments of Michael Burckure, Jocelyn Guidry, Norma Nicely and Nora Vogel

I grew up in Pittsburgh and Western Pennsylvania. I have an intimate relationship with these hills and valleys.

I enjoy painting this area, more than any other place in the world, because I feel an emotional stimulation created by the topography, the old neighborhoods and especially the people.

I suppose I'm better known for painting the area landscapes. But I enjoy painting the people of this area as well. I like the natural, honest attitude of the working class people and I try to bring that attitude into my paintings when I have the opportunity.

When I paint the figure from life, I prefer an informal, relaxed sitting and hope to relay that feeling to the viewer. It's what I will try for in this upcoming demonstration.

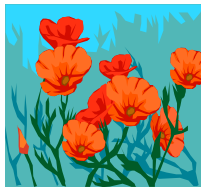
William M. Vrscak

Spring BVA Show 2010

Drop off: March 26 and 27

Show Date: April 11

Judge Critique: April 29



Unwanted Art Book Sale: Bring up to 3 art books you'd like to sell to the BVA meetings. The BVA will charge a 10% commission on sales.

Christ's Evangelical Lutheran Church will be holding The Twelfth Annual Juried Art Show.

Date: October 8 - 25, 2009

Drop off dates: October 2nd, 4:00 to 8:00 pm

October 3rd, 10:00 am. to 2:00 pm

Call 724-846-2899 for further information.

Member News:

Cynthia Weidner will be one of the featured artists at River's Edge Studio Art Gallery 709 Third Ave. New Brighton, PA 15066 (724)581-4783.

Gallery hours:

Tues. & Thurs. 11am – 7pm

Wed. & Fri. 11am – 5pm

Sat. 10am – 3pm

Congratulations! **Carol Volz Begley PSA** has had an oil portrait accepted in the juried American Artist Professional League Inc. 81st Grand National Exhibition held at the Salmagundi Club in New York City. She also has received two pastel awards, one from Pastel Society of West Coast and the Chicago Biennial..

Congratulations! **Dona Boots** received First Place in oil painting in the current Nature and Wildlife Show at the Butler Art Center, Butler, PA. She is an invited artist for the Art Center's 75th Anniversary show, 'Best of the Best' in October. The show will feature artists who have won Best of Show awards at the Center over the years.

David Ludwick's Instructions for Preparing Surface for Pastel and Charcoal

1. This formula can be used to prepare panels for either charcoal or pastel drawing. Once mixed, it can be stored for about a month if sealed properly. A quart will cover about a 6 foot by 6 foot square with ONE coat of textured primer. It can be applied to most any smooth surface such as cardboard, masonite, or smooth plywood.
2. Use either gesso or an all purpose primer that dries to a FLAT finish. To a quart of primer add a little of a flat latex paint to tint the primer. Example: if a gray surface is desired, start by adding a couple teaspoons of black paint. Remember the primer will dry DARKER ... more paint can be added until the desired color is reached.
3. To create texture stir PUMICE POWDER into the tinted primer. Don't use sand as it is too coarse. The amount of texture can be adjusted by adding more or less pumice. Start with about a half pint of pumice to a quart of primer....feel free to use more if desired. Remember two coats are applied so the amount of texture will double with the second coat of primer. Pumice powder can be found at hardware stores or online in larger quantities.
4. Apply an even coat of textured primer to the panel with a small foam roller cover (such as a 4 inch roller) attempting to avoid leaving roller marks...just an even coat. The primer will dry in less than 30 minutes...when dry, apply a second coat. I use a random pattern rather than a back and forth pattern. Prepare as many panels as desired as they will keep for years if stored in a dry area.

Call for Artists

Sweetwater® is seeking artists to display their works at its 15th annual Holiday mART. The benefits of selling your work at Holiday mART are: ① There is **NO table fee**, just a one time submission fee of only \$10 & ② The artists do not have to be at the sale—the entire process is streamlined and efficiently run by dedicated volunteers. Artists only need to inventory their work online, label it, and drop it off or mail it to Sweetwater®. The sale is set up and run entirely by the Holiday mART committee.

Submission Deadline October 15th

Holiday mART is a juried event

Applications available online:

www.sweetwaterartcenter.org/call_for_artists.asp

Send newsletter submissions to: Jocelyn Guidry
724-899-3136 146 Century Farm Rd
Clinton, PA 15026
jgg899@yahoo.com

Send website submissions to: Linda Headland
724-775-1787 lheadland@beavervalleyartists.org

Membership Dues: Avoid the additional \$5 late fee that goes into effect after November. **Individual: \$20 Family: \$25**

Make checks payable to: Beaver Valley Artists.

Mail to: Jane Cerilli
1127 Indiana Ave.
Monaca, PA 15061



New Portrait Workshop with Christine Swann, PSA "The Power of Pastel"

November 14 and 15th (Sat and Sun)

South Side, Carson Street, Pgh PA

9:00-3:00pm

All Levels welcome

\$120

For more information and to reserve a place in the workshop call 724-444-8197

or email christine@swannportraits.com

website: swannportraits.com

Visit www.beavervalleyartists.org for the latest BVA news!