



Beaver Valley Artists

Official Newsletter of the Beaver Valley Artists

November 2010

Next Meeting

Thursday, November 11th

Merrick Art Gallery

Program

ChiaLing Bull: Chinese Calligraphy

Meetings will resume in February

Refreshments for the November meeting compliments
of Jocelyn Guidry, Jan Pociernicki, Lynn Roberts
& Ray Zielinski

At the November 11 meeting we will be hosting an artist from Taiwan. Her name is ChiaLing Bull. ChiaLing has lived, studied, and worked in the Western Pennsylvania area for the last 10 years. She has a Bachelors degree from Slippery Rock University in Painting, and a Bachelors degree in English from Indiana University of Pa. She completed her student teaching in art at Carlow College in May. Her demonstration will include traditional Chinese Calligraphy using a bamboo brush and ink, and a discussion, display, and demonstration of her abstract expressionist style paintings.

Member News:

Welcome to new BVA member **Colleen Tittiger!**

Congratulations to the following BVA members who received awards at Christ Evangelical Lutheran Church's annual art show: **Jocelyn Guidry** received Best of Show, **Norma Nicely** received First Place and **Ray Zielinski** received a Judge's Award.

Carol Volz Begley, PSA had an oil portrait titled "Jill" accepted into the Viewpoint 2010, a national juried art competition sponsored by the Cincinnati Art Club. This exhibit comprises 70 works by national artists in various media. Carol also had "Alleyscape", a pastel, on exhibit at the National Arts Club in New York City for the The 38th Annual Pastel Society of America's "For Pastels Only" exhibit. This exhibit is selected to travel to the Butler Institute of American Art in Youngstown, Ohio to be on display during December 2010 and January 2011. Carol's oil painting, "Alleyscape" placed 3rd in the local Carnegie Painted Exhibit held at 3rd Street Gallery in August 2010.

Membership Dues: Avoid the additional \$5 late fee that goes into effect after November. **Individual: \$20 Family: \$25**

The Membership year will now start in April.

Make checks payable to: Beaver Valley Artists.

Mail to: Jane Cerilli

1127 Indiana Ave.

Monaca, PA 15061

Send newsletter submissions to:

Jocelyn Guidry 724-899-3136

146 Century Farm Rd

Clinton, PA 15026

jgg899@yahoo.com

Send website submissions to: Linda Headland

724-775-1787

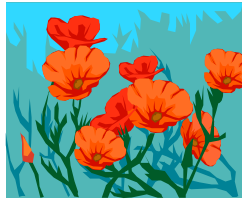
lheadland@beavervalleyartists.org

Unwanted Art Book Sale: Bring up to 3 art books you'd like to sell to the BVA meetings. The BVA will charge a 10% commission on sales.

34th Annual Beaver Valley Artists Juried Exhibition

April 3rd - April 20th, 2011

The Merrick Art Gallery
1100 5th Avenue
New Brighton, PA 15066
(724) 846-1130



Call for artists!

Linda Richards is opening a art/curio shop in Bridgewater on Oct. 1st. She is looking for artists who would like to have their work on consignment. Linda Richards is a longtime supporter of the arts and is on the board for Merrick Art Gallery Associates. Anyone interested in have their work displayed on consignment can call her at: 724-709-8104 or her cell at: 814-573-5307.

Have you always wanted to sell more of your artwork? Sell to new markets? Display and sell in a fun non-gallery setting? Interact with prospective buyers?

If so, consider the ARTISTS MARKET. Our mission is: To enable artists to display and sell more of their artwork within a community environment. We will create spaces that celebrates artists.

The ARTISTS MARKET will be markets in various locations in the Pittsburgh area. Some will be located in storefronts and others may be open-air markets. First site will be in the East End of Pittsburgh. ARTISTS MARKET will be open every Saturday and Sunday.

For more information contact Sal Greco: 724-316-9326 or avanti37@consolidated.net

Sweetwater Ceter for the Arts

Who, Me? February 5-26, 2011

Here is a chance for you to look inward, possibly discover something new about yourself and give the viewer some insight into who you are. **This is a self-portrait exhibit. The art piece can be a physical representation of yourself, OR any subject that strongly represents a dominate aspect of your personality.**

Enter a piece that communicates something that is uniquely YOU. Consider what your art reveals about you as a person, or what kind of habits, struggles, joys, patterns, quirks or obsessions you have discovered in making art.

Include a BRIEF explanation in approximately 50 words or less that says what you want to say about yourself.

There is no wrong explanation, but include something that most people would not otherwise know about you, or something that surprised you about yourself! (Your explanation will be placed with the art.)

Enter one piece, any medium. Work must have been completed in the last 2 years. No size restrictions.

***ENTRIES MUST BE RECEIVED BY FRIDAY, JANUARY 7, 2011.**

[CLICK HERE TO DOWNLOAD AN ENTRY FORM.](#)

Visit www.beavervalleyartists.org for the latest BVA news!